



**PROTECTS**

**WHAT IS MOST**

**PRECIOUS**



**CEASEFIRE HOME & CAR  
FIRE EXTINGUISHERS RANGE**





# FEW MINUTES. THAT'S ALL THE TIME YOU HAVE BEFORE A FIRE GETS OUT OF CONTROL.

That's the same amount of time you have to detect the fire, rush your family to safety and fight the fire.

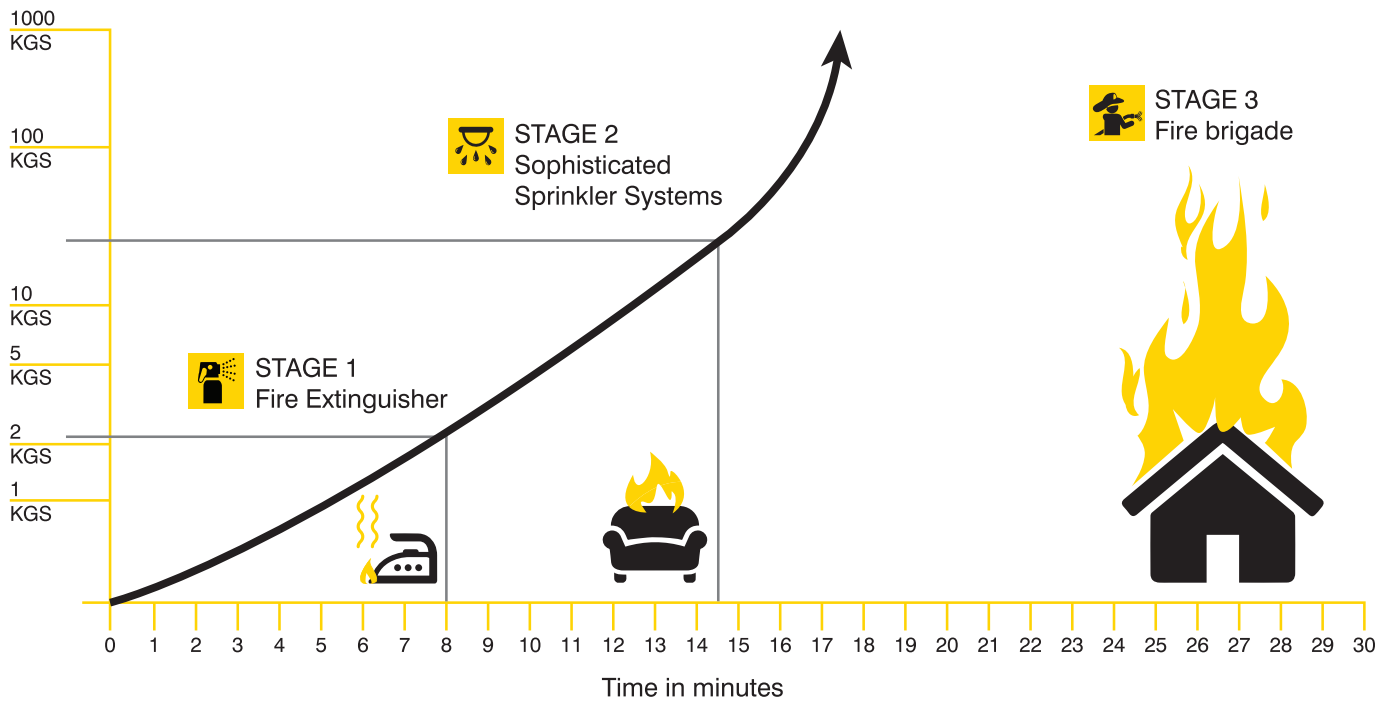
Packed with modern utilities for a comfortable lifestyle, homes have become extremely prone to fire. A spark in the electrical panel, a short circuit in the air conditioner or heater, an open flame in the mandir, a carelessly tossed matchstick, an unattended stove, a gas leak; these dangers lurk around the walls of our homes at all times.

The fire services are always on hand to help with a fire emergency, but the reality is that given the way our traffic conditions are today, chances are help won't arrive on time. In most cases, by the time fire tenders reach the scene of fire, they have already lost the little window to control fire and prevent damage.

Resorting to flooding the area to prevent the fire from spreading, and leaving the home where fire occurred charred and levelled.



## Fire Grows Exponentially



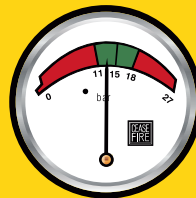


The picture of your parents on the side table. The souvenir from your last vacation. The sofa set you spent hours choosing. We know the time you've spent and the effort you've made to make your house a home, which is why we created masterpieces that complement it, while protecting it.

Designed to match the aesthetics of your home, so that it's not tucked out of sight in a fire situation, Ceasefire's Designer range of extinguishers are art installations of fine stainless steel and ink, crafted to meet international standards and designed to exceed them. Making these extinguishers true works of art. Art that save property and lives.



# ENGINEERED TO SAVE LIVES



Unique pressure gauge shows that the extinguisher is ready to use if the needle points to green.

Easy-grip plastic handle

Tamper-proof, easy to pull yellow seal

Precision engineered valve assembly

Rust treated inner cylinder

Epoxy powder coated, outside and inside

Leak-proof, deep drawn steel body

Pilfer-proof bracket



The Ceasefire Designer Extinguisher uses a combination of mono ammonium phosphate (MAP) and ammonium sulphate, packed into a stainless steel extinguisher. The ABC powder ensures a 90% concentration of MAP is available to fight the flames, maximising the extinguisher's firefighting power.

Stringent quality control and multiple point testing systems ensures that when faced with a fire, these extinguishers deliver. The lightweight extinguisher is has a powerful throw, to penetrate past the finest grills and meshes.



# FEATURES



## **Effective against Class A, B and C as well as Electrical fires:**

The multiple applications of the extinguishing agent help save valuable time while the agent's effectiveness maximises the firefighting power.



## **Aesthetically Pleasing:**

The modern home is driven by aesthetics. Ceasefire's Designer Extinguishers are created to match the aesthetics of your home, while protecting it.



## **MAP 90:**

90% concentration of Mono Ammonium Phosphate maximises the firefighting power of the extinguisher.



## **Highly Effective:**

Built for speed, power and reliability.



## **Quality Control:**

Stringent quality control and multiple point testing systems ensure that when you are faced with a fire, these extinguishers will deliver.



## **Standards:**

Virtually every Ceasefire extinguisher has LPCB and CE certifications, and conforms to PED standards.



## **Simplicity in Handling:**

The easy-grip plastic handle aids simplicity in handling.



## **World Class Quality:**

Comes with ISO 9001 and CE certification, and conforms to PED standards. Comprehensive Helium Tests and Leak Tests also guarantee that the products you buy are manufactured according to the world's most stringent quality standards.



## **Discharge Mechanism:**

A simple discharge mechanism allows you to control the discharge and optimise the use of the extinguishing agent.



## **Warranty:**

The 5 years Warranty means Ceasefire is looking out for the health of your fire safety products.





---

**Sizes Available: 500 g and 1 kg**

**Variants Available: MAP 50 and MAP 90**

# TECHNICAL SPECIFICATIONS

Nomenclature	Fire Ext. MAP 90 500Gms MS SP Red Texture	Fire Ext. MAP 90 500Gms MS SP Ivory Texture	Fire Ext. MAP 90 500Gms MS SP Blue Texture	Fire Ext. MAP 90 500Gms MS SP Silver Texture	Fire Ext. MAP 90 500Gms MS SP Hexalight	Fire Ext. MAP 90 500Gms MS SP Kiterunner	Fire Ext. MAP 90 500Gms MS SP Union Jack	Fire Ext. MAP 90 1Kg MS SP Red
Stored Pressure / Cartridge	Stored Pressure	Stored Pressure	Stored Pressure	Stored Pressure	Stored Pressure	Stored Pressure	Stored Pressure	Stored Pressure
Agent	ABC Powder MAP 90	ABC Powder MAP 90	ABC Powder MAP 90	ABC Powder MAP 90	ABC Powder MAP 90	ABC Powder MAP 90	ABC Powder MAP 90	ABC Powder MAP 90
Throw Distance	3 meters	3 meters	3 meters	3 meters	3 meters	3 meters	3 meters	3 meters
Agent Category	ABC Powder	ABC Powder	ABC Powder	ABC Powder	ABC Powder	ABC Powder	ABC Powder	ABC Powder
Product Code	CF-000224	CF-000223	CF-000222	CF-000225	CF-000946	CF-000947	CF-001315	CF-000721**
LPCB	No	No	No	No	No	No	No	Yes
Kitemark	No	No	No	No	No	No	No	Yes
PED	Yes	Yes	Yes	Yes	Yes	Yes	Yes	Yes
UKCA-PED	Yes	Yes	Yes	Yes	Yes	Yes	Yes	Yes
EU-MED	No	No	No	No	No	No	No	Yes
UKCA-MER	No	No	No	No	No	No	No	Yes
Gross Weight (approx.)	1.45 kg	1.45 kg	1.45 kg	1.45 kg	1.45 kg	1.45 kg	1.45 kg	1.98 kg
Net Mass (approx.)	0.500 kg	0.500 kg	0.500 kg	0.500 kg	0.500 kg	0.500 kg	0.500 kg	1 kg
Height of Fire Ext. (approx.)	265 mm	265 mm	265 mm	265 mm	265 mm	265 mm	265 mm	325 mm
Discharge Mechanism	Thumb Triggered	Thumb Triggered	Thumb Triggered	Thumb Triggered	Thumb Triggered	Thumb Triggered	Thumb Triggered	Thumb Triggered
Applicable on Fires	A, B, C, & Electrical Started Fire	A, B, C, & Electrical Started Fire	A, B, C, & Electrical Started Fire	A, B, C, & Electrical Started Fire	A, B, C, & Electrical Started Fire	A, B, C, & Electrical Started Fire	A, B, C, & Electrical Started Fire	A, B, C, & Electrical Started Fire
EN 3 Ratings Class A Fire	N/A	N/A	N/A	N/A	N/A	N/A	N/A	5A
EN 3 Ratings Class B Fire	N/A	N/A	N/A	N/A	N/A	N/A	N/A	21B
Can Construction	Deep Drawn and MIG Welded	Deep Drawn and MIG Welded	Deep Drawn and MIG Welded	Deep Drawn and MIG Welded	Deep Drawn and MIG Welded	Deep Drawn and MIG Welded	Deep Drawn and MIG Welded	Deep Drawn and MIG Welded
Valve / Cap Construction	Forging and Machining	Forging and Machining	Forging and Machining	Forging and Machining	Forging and Machining	Forging and Machining	Forging and Machining	Forging and Machining
External Coating	Epoxy Polyester Powder	Epoxy Polyester Powder	Epoxy Polyester Powder	Epoxy Polyester Powder	Epoxy Polyester Powder Coated & Laminated	Epoxy Polyester Powder Coated & Laminated	Epoxy Polyester Powder Coated & Laminated	Epoxy Polyester Powder
Helium Leak Detection Testing	Yes	Yes	Yes	Yes	Yes	Yes	Yes	Yes
Warranty In Years	5	5	5	5	5	5	5	5
G.A. Drawing Number	CF/SP.65/GA/04	CF/SP.65/GA/04	CF/SP.65/GA/04	CF/SP.65GA/04	CF/SP.65/GA/04	CF/SP.65/GA/04	CF/SP.65/GA/04	CF/SP-1LB- 90/GA/05
Working Pressure	15 Bar	15 Bar	15 Bar	15 Bar	15 Bar	15 Bar	15 Bar	15 Bar
Dia. Of Shell (OD)	74.5 mm	74.5 mm	74.5 mm	74.5 mm	74.5 mm	74.5 mm	74.5 mm	86.5 mm
Operating Temperature	-30° C to +60° C	-30° C to +60° C	-30° C to +60° C	-30° C to +60° C	-30° C to +60° C	-30° C to +60° C	-30° C to +60° C	-30° C to +60° C
Hydrostatic Test Pressure	35 Bar	35 Bar	35 Bar	35 Bar	35 Bar	35 Bar	35 Bar	35 Bar
Cylinder Material Spec.	Steel CR2(DC01)	Steel CR2(DC01)	Steel CR2(DC01)	Steel CR2(DC01)	Steel CR2(DC01)	Steel CR2(DC01)	Steel CR2(DC01)	Steel CR2(DC01)
Body Thickness	1.2 mm	1.2 mm	1.2 mm	1.2 mm	1.2 mm	1.2 mm	1.2 mm	1 mm

\*\* Available with additional hanging bracket.

Please check the product specifications at the time of placing your order from our website (address of which is given at the end of this catalogue). Specifications can change without notice due to our continuous R&D and product improvisation initiatives.

# TECHNICAL SPECIFICATIONS

Nomenclature	Fire Ext. MAP 90 1Kg Red Texture	Fire Ext. MAP 90 1Kg Ivory Texture	Fire Ext. MAP 90 1Kg Blue Texture	Fire Ext. MAP 90 1Kg Silver Texture	Fire Ext. MAP 90 1Kg MS SP Waves	Fire Ext. MAP 90 1Kg MS SP Elasticity	Fire Ext. MAP 50 1Kg MS SP Red	Fire Ext. MAP 50 1Kg MS SP Red
Stored Pressure / Cartridge	Stored Pressure	Stored Pressure	Stored Pressure	Stored Pressure	Stored Pressure	Stored Pressure	Stored Pressure	Stored Pressure
Agent	ABC Powder MAP 90	ABC Powder MAP 90	ABC Powder MAP 90	ABC Powder MAP 90	ABC Powder MAP 90	ABC Powder MAP 90	ABC Powder MAP 50	ABC Powder MAP 50
Throw Distance	3 meters	3 meters	3 meters	3 meters	3 meters	3 meters	3 meters	3 meters
Agent Category	ABC Powder	ABC Powder	ABC Powder	ABC Powder	ABC Powder	ABC Powder	ABC Powder	ABC Powder
Product Code	CF-001185	CF-001105	CF-001106	CF-001107	CF-000951	CF-000954	CF-000803	CF-000730**
LPCB	Yes*	Yes*	Yes*	Yes*	No	No	Yes	Yes
Kitemark	No	No	No	No	No	No	Yes	Yes
PED	Yes	Yes	Yes	Yes	Yes	Yes	Yes	Yes
UKCA-PED	Yes	Yes	Yes	Yes	Yes	Yes	Yes	Yes
EU-MED	No	No	No	No	No	No	Yes	Yes
UKCA-MER	No	No	No	No	No	No	Yes	Yes
Gross Weight (approx.)	1.98 kg	1.98 kg	1.98 kg	1.98 kg	2.25 kg	2.25 kg	1.98 kg	1.98 kg
Net Mass (approx.)	1 kg	1 kg	1 kg	1 kg	1 kg	1 kg	1 kg	1 kg
Height of Fire Ext. (approx.)	325 mm	325 mm	325 mm	325 mm	325 mm	325 mm	350 mm	325 mm
Discharge Mechanism	Thumb Triggered	Thumb Triggered	Thumb Triggered	Thumb Triggered	Thumb Triggered	Thumb Triggered	Squeeze Grip	Thumb Triggered
Applicable On Fires	A, B, C, & Electrical Started Fire	A, B, C, & Electrical Started Fire	A, B, C, & Electrical Started Fire	A, B, C, & Electrical Started Fire	A, B, C, & Electrical Started Fire	A, B, C, & Electrical Started Fire	A, B, C, & Electrical Started Fire	A, B, C, & Electrical Started Fire
EN 3 Ratings Class A Fire	5A	5A	5A	5A	N/A	N/A	5A	5A
EN 3 Ratings Class B Fire	21B	21B	21B	21B	N/A	N/A	34B	34B
Can Construction	Deep Drawn and MIG Welded	Deep Drawn and MIG Welded	Deep Drawn and MIG Welded	Deep Drawn and MIG Welded	Deep Drawn and MIG Welded	Deep Drawn and MIG Welded	Deep Drawn and MIG Welded	Deep Drawn and MIG Welded
Valve / Cap Construction	Forging and Machining	Forging and Machining	Forging and Machining	Forging and Machining	Forging and Machining	Forging and Machining	Forging and Machining	Forging and Machining
External Coating	Epoxy Polyester Powder	Epoxy Polyester Powder	Epoxy Polyester Powder	Epoxy Polyester Powder	Epoxy Polyester Powder Coated & Laminated	Epoxy Polyester Powder Coated & Laminated	Epoxy Polyester Powder	Epoxy Polyester Powder
Helium Leak Detection Testing	Yes	Yes	Yes	Yes	Yes	Yes	Yes	Yes
Warranty In Years	5	5	5	5	5	5	5	5
G.A. Drawing Number	CF/SP-1/GA/05	CF/SP-1/GA/05	CF/SP-1/GA/05	CF/SP-1/GA/05	CF/SP-1LB-50/GA/05	CF/SP-1LB-50/GA/05	CF/SP-1LB-EXP50/GA/05	CF/SP-1LB-50/GA/05
Working Pressure	15 Bar	15 Bar	15 Bar	15 Bar	15 Bar	15 Bar	15 Bar	15 Bar
Dia. Of Shell (OD)	86.5 mm	86.5 mm	86.5 mm	86.5 mm	86.5 mm	86.5 mm	86.5 mm	86.5 mm
Operating Temperature	-30° C to +60° C	-30° C to +60° C	-30° C to +60° C	-30° C to +60° C	-30° C to +60° C	-30° C to +60°	-30° C to +60°	-30° C to +60°
Hydrostatic Test Pressure	35 Bar	35 Bar	35 Bar	35 Bar	35 Bar	35 Bar	35 Bar	35 Bar
Cylinder Material Spec.	Steel CR2(DC01)	Steel CR2(DC01)	Steel CR2(DC01)	Steel CR2(DC01)	Steel CR2(DC01)	Steel CR2(DC01)	Steel CR2(DC01)	Steel CR2(DC01)
Body Thickness	1 mm	1 mm	1 mm	1 mm	1.6 mm	1.6 mm	1 mm	1 mm

\*Technical approval to EN 3 except EN 3-7 clause 16.1 LPCB ref 1329g.

\*\* Available with additional hanging bracket.

Please check the product specifications at the time of placing your order from our website (address of which is given at the end of this catalogue). Specifications can change without notice due to our continuous R&D and product improvisation initiatives.

DESIGNER SERIES  
THE CLASSIC RANGE



---

The Classic Designer Series extinguishers  
are available in a choice of four colours:

Blue, Ivory, Silver and Red  
to match your interiors.

---

# DESIGNER SERIES THE ART RANGE



Ceasefire  
Kiterunner



Ceasefire  
Hexalight



Ceasefire  
Union Jack



Ceasefire  
Elasticity



Ceasefire  
Waves

## MULTI-ANGLE VIEW



**POWDER**  
**FIRE EXTINGUISHER**  
 1KG ABC POWDER  
 SA 34B C

1. PULL OUT THE SAFETY SEAL.  
 2. AIM THE NOZZLE AT THE BASE OF FIRE AND DEPRESS THE LEVER. FROM A DISTANCE OF 2 METERS.

FOR USE ON FIRES INVOLVING:

A B C

LPCB  
 UKCA  
 CE  
 KIBRUS

CEASEFIRE INDUSTRIES LIMITED  
 114, CHALMERS INDUSTRIAL PARK,  
 PRINCETON ROAD, PRINCETON, Notts

01773 511111  
 www.ceasefire.co.uk

# CEASEFIRE DESIGN CELL :

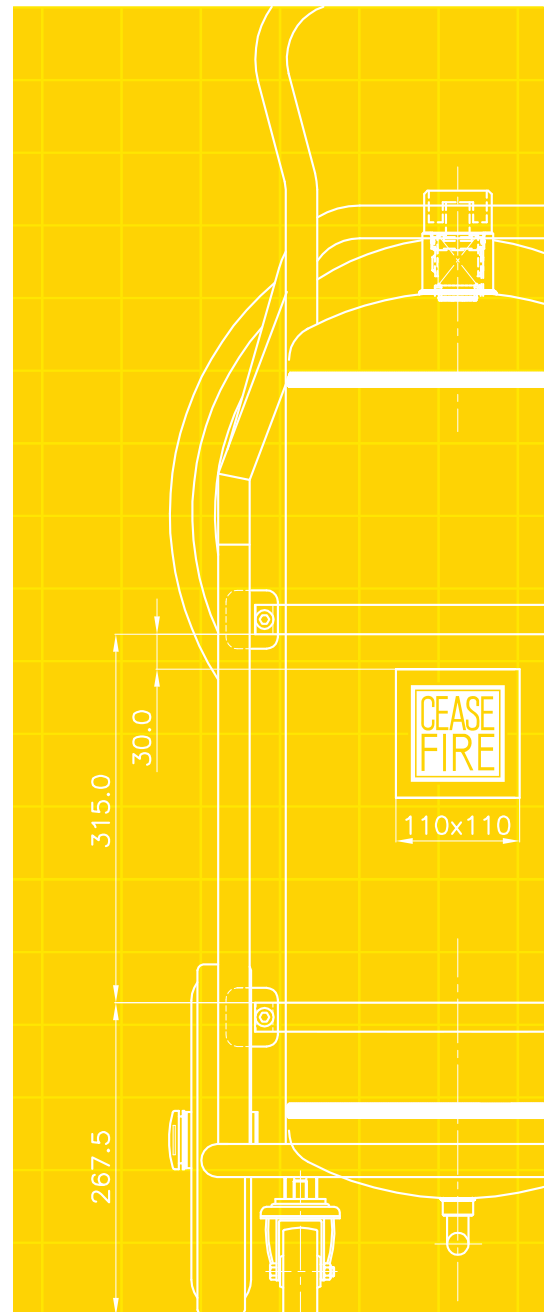
No two premises are alike. By offering the most flexible system configurations in the industry, Ceasefire provides the most efficient protection for facilities. Believing that the most effective fire solutions are the ones that are customised according to the unique characteristics of the area being protected, Ceasefire has established the Ceasefire Design Cell (CDC).

Functioning as the single touch point for all fire safety needs, CDC is manned by fire experts and managers with years of experience in fire safety under their belts. As a part of Ceasefire's 360 degree protection solution, the Ceasefire Technical Survey team visits your facility and conducts a detailed study to understand its vulnerabilities and requirements. They survey the premises and work out requirement based on fire threats in the room.

Once it has been finalised, Ceasefire's expert Installation Team oversee installation and testing. The Ceasefire Team also trains you and your staff to use the fire safety system.

## Benefits:

- An exhaustive planning process, executed by engineers with years of experience.
- State-of-the-art solutions and products in association with world leaders.
- Design and installation of your System overseen by professionals, ensuring delivery of a high quality & reliable system.



## CEASEFIRE NOW

360° lifesaving fire safety solutions. More than 3,000 new customers a month. A product sold every 61 seconds. A life saved every 5 minutes. Presence in over 300 cities and towns. Backed by a team of more than 2,000. 400 lifesaving products – from green fire extinguishers that can tackle any kind of fire to first of its kind automatic fire extinguisher to most advanced independent suppression systems – Ceasefire has it all. We're equipped and ready to protect your premises.



## Ceasefire Industries UK Limited

**Registered Office:** Halfords Lane, Smethwick, Birmingham,  
B66 1BU

Tel: 0-113-868-6666 / 0-126-891-9999



Scan the QR code  
to visit our website

Website : [www.ceasefire.co.uk](http://www.ceasefire.co.uk)

Follow us on:



Please check the product specifications at the time of placing your order. Specifications can change without notice due to our continuous R&D and product improvisation initiatives.